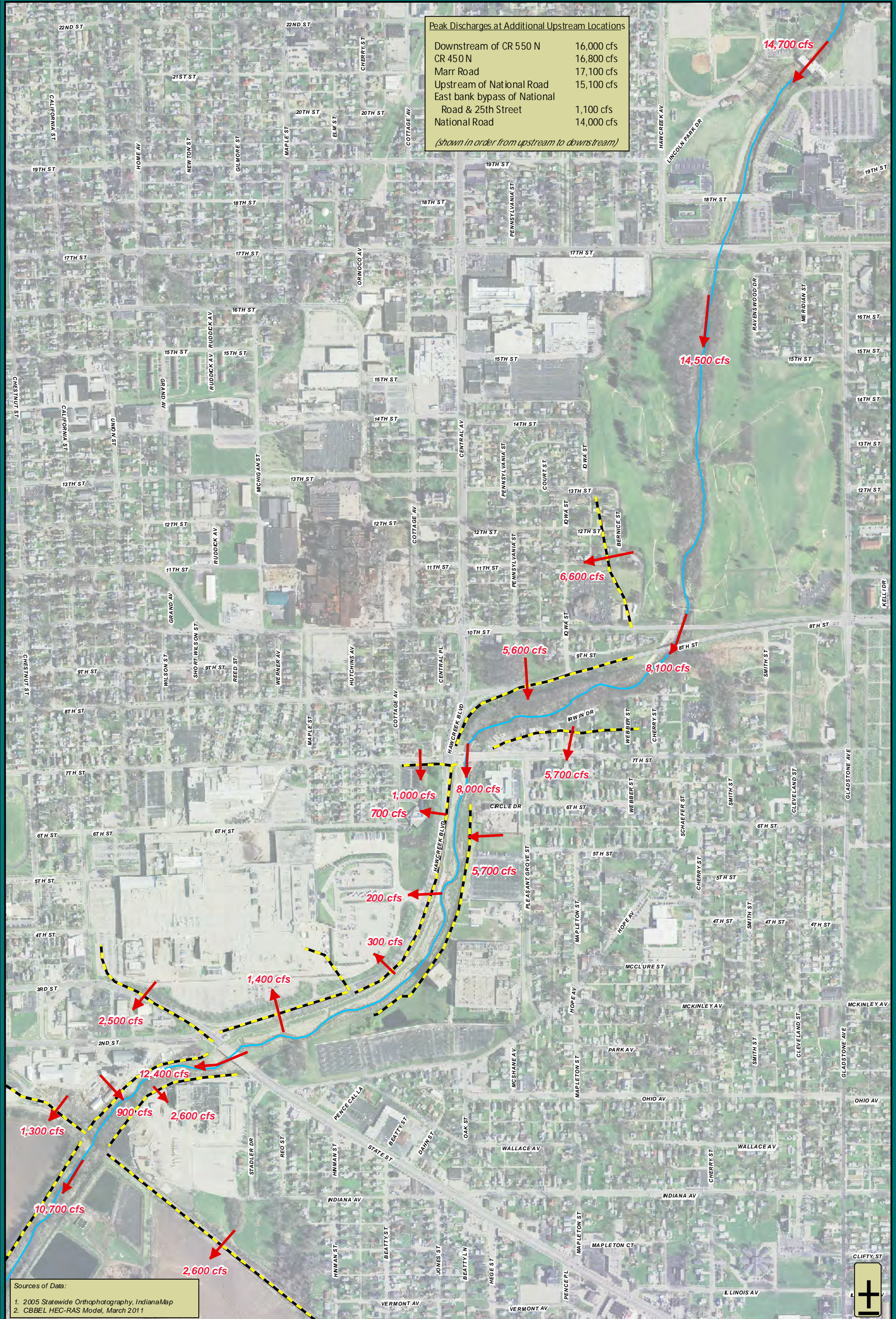


Peak Discharges at Additional Upstream Locations

Downstream of CR 550 N	16,000 cfs
CR 450 N	16,800 cfs
Marr Road	17,100 cfs
Upstream of National Road	15,100 cfs
East bank bypass of National Road & 25th Street	1,100 cfs
National Road	14,000 cfs

(shown in order from upstream to downstream)



Sources of Data:
 1. 2005 Statewide Orthophotography, IndianaMap
 2. CBBEL HEC-RAS Model, March 2011

Direction of Peak Flow
 Haw Creek Centerline
 Overflow Location

Christopher B. Burke Engineering, Ltd.
 PNC Center, Suite 1368 South
 115 West Washington Street
 Indianapolis, Indiana 46204
 (t) 317.266.8000 (f) 317.632.3306

PROJECT:
Haw Creek Flood Mitigation Plan

TITLE:
June 2008 Model Peak Flow Results

PROJECT NO. 06-324 bg2
 APPROX. SCALE 1" = 600'
 DATE: 05/2011
 EXHIBIT