



ELECTION SIGNS

On Properties in the City of Columbus and Bartholomew County

Election Signs: Those related to candidates or issues to be voted on by the public.

General Sign Standards

Number Allowed per Property:

Unlimited

Placement:

- A minimum of 5 feet from neighboring property lines
- Must not block intersection visibility
- Must not be in a public street right-of-way

60 Days Before and Until the 6th Day After an Election

During this period, Indiana law suspends the application of any local limits on the number of signs that may be displayed, provided no individual sign exceeds 32 sq.ft. in area (IC Sec 36-1-3-11).

Maximum Sign Size:

32 square feet

Maximum Sign Height:

No limit

All Other Times

On Residential Properties

Maximum Sign Size:

6 square feet

Maximum Sign Height:

6 feet

On Non-residential Properties

Maximum Sign Size:

32 square feet

Maximum Sign Height:

10 feet

Public Right-of-Way (Signs Are Prohibited)

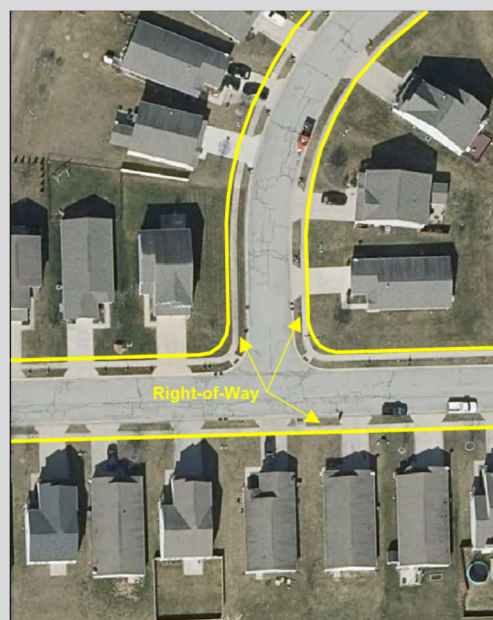
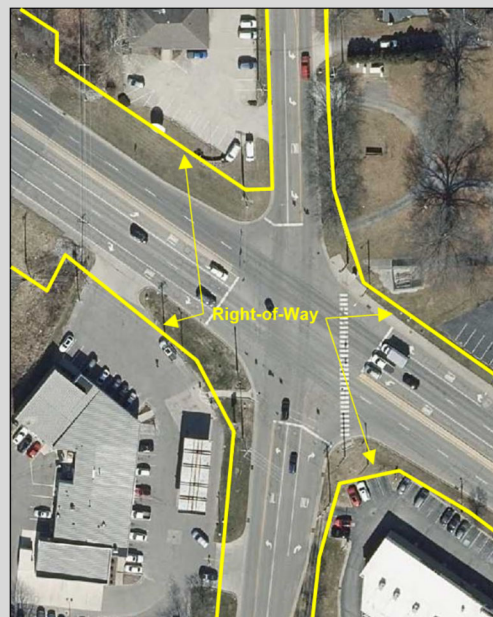
Did You Know?

The **public right-of-way** is the publicly-owned property in which a street is located. The extent of the right-of-way varies by street, especially on state highways and other high-volume roads.

It usually includes the street, sidewalk, and some lawn area behind the sidewalk.

Therefore, signs should be placed behind the sidewalk where present. See examples to the right.

Examples



CITY OF COLUMBUS - BARTHOLOMEW COUNTY
PLANNING DEPARTMENT

For more info: contact City Code Enforcement (812-376-2520) or
the Planning Department (812-376-2550 or planning@columbus.in.gov).