

# Permitting Schedule

COMPLETE WETLAND  
INVESTIGATION

7 JUN 2019

19 JUL  
2019

WETLAND  
JURISDICTIONAL  
DETERMINATION  
SUBMITTAL TO USACE

FINALIZE PERMIT /  
DESIGN DEVELOPMENT  
DRAWINGS

16 AUG  
2019

OBTAIN WETLAND  
JURISDICTIONAL  
DETERMINATION

13 SEP  
2019

COMPLETE  
DNR/USACE/IDEM PERMIT  
APPLICATIONS

SEP – OCT  
2019

SUBMIT ALL PERMIT  
APPLICATIONS

31 OCT  
2019

RECEIVE APPROVALS

APRIL 2020

# Overall Schedule

RIVERFRONT CONCEPT PLAN

FEB 2017 – JAN  
2018

SCHEMATIC DESIGN

MAR – AUG  
2018

DESIGN DEVELOPMENT

SEP 2018 –  
AUG 2019

CONSTRUCTION DOCUMENTS

PERMITTING  
SEP 2019- APR 2020

NOV 2019 –  
MAR 2020

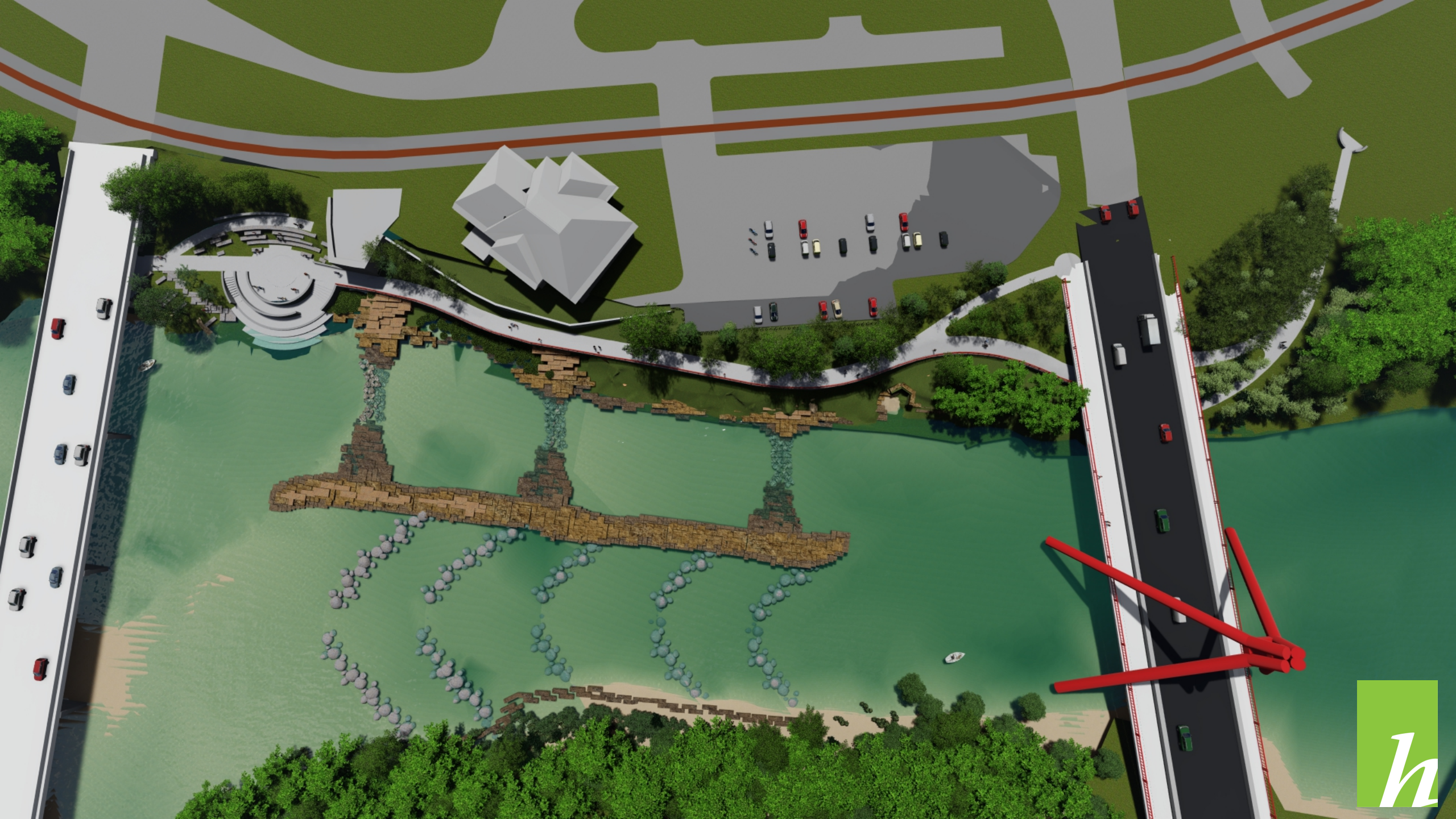
BIDDING

2 MONTHS

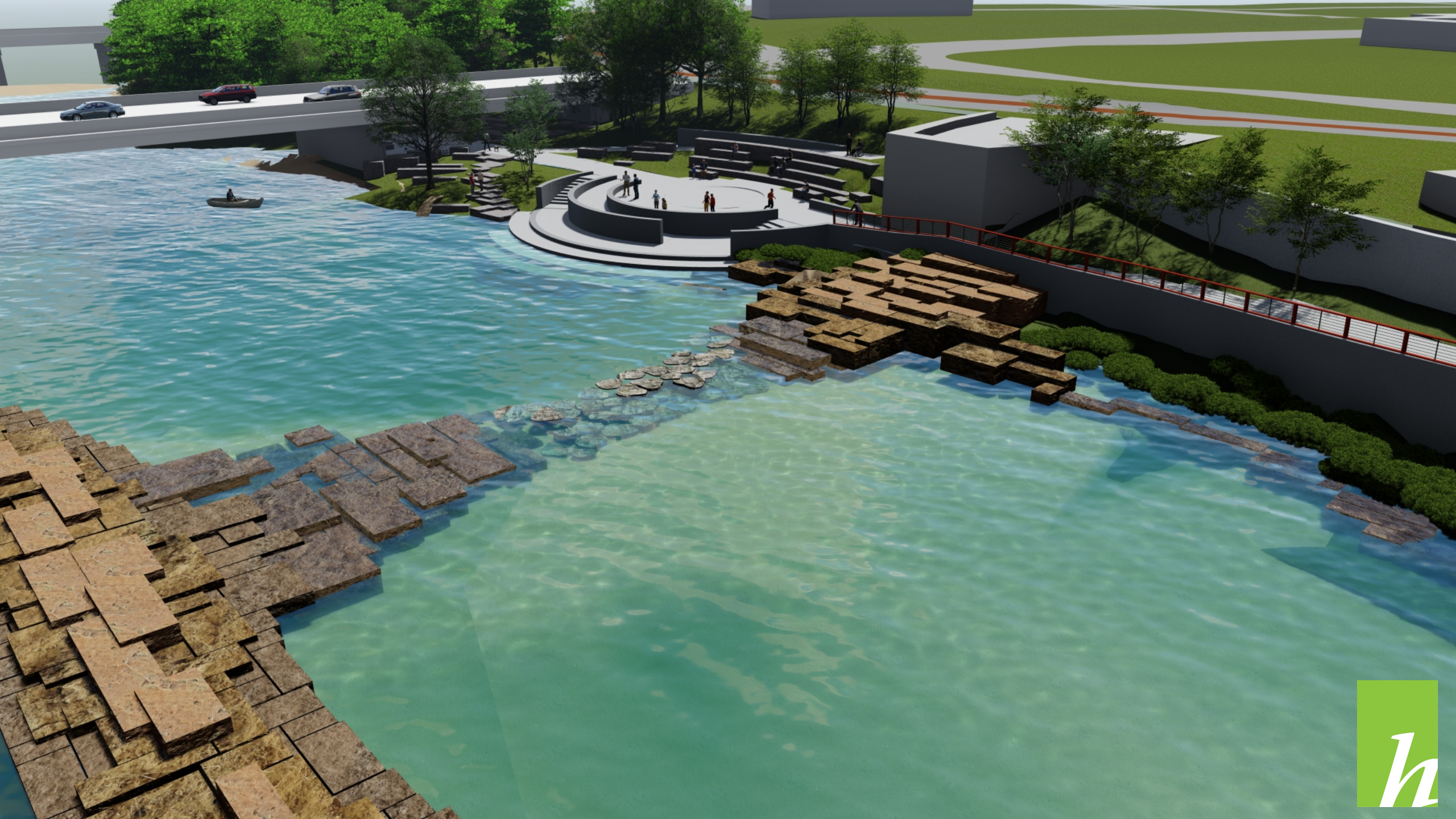
CONSTRUCTION

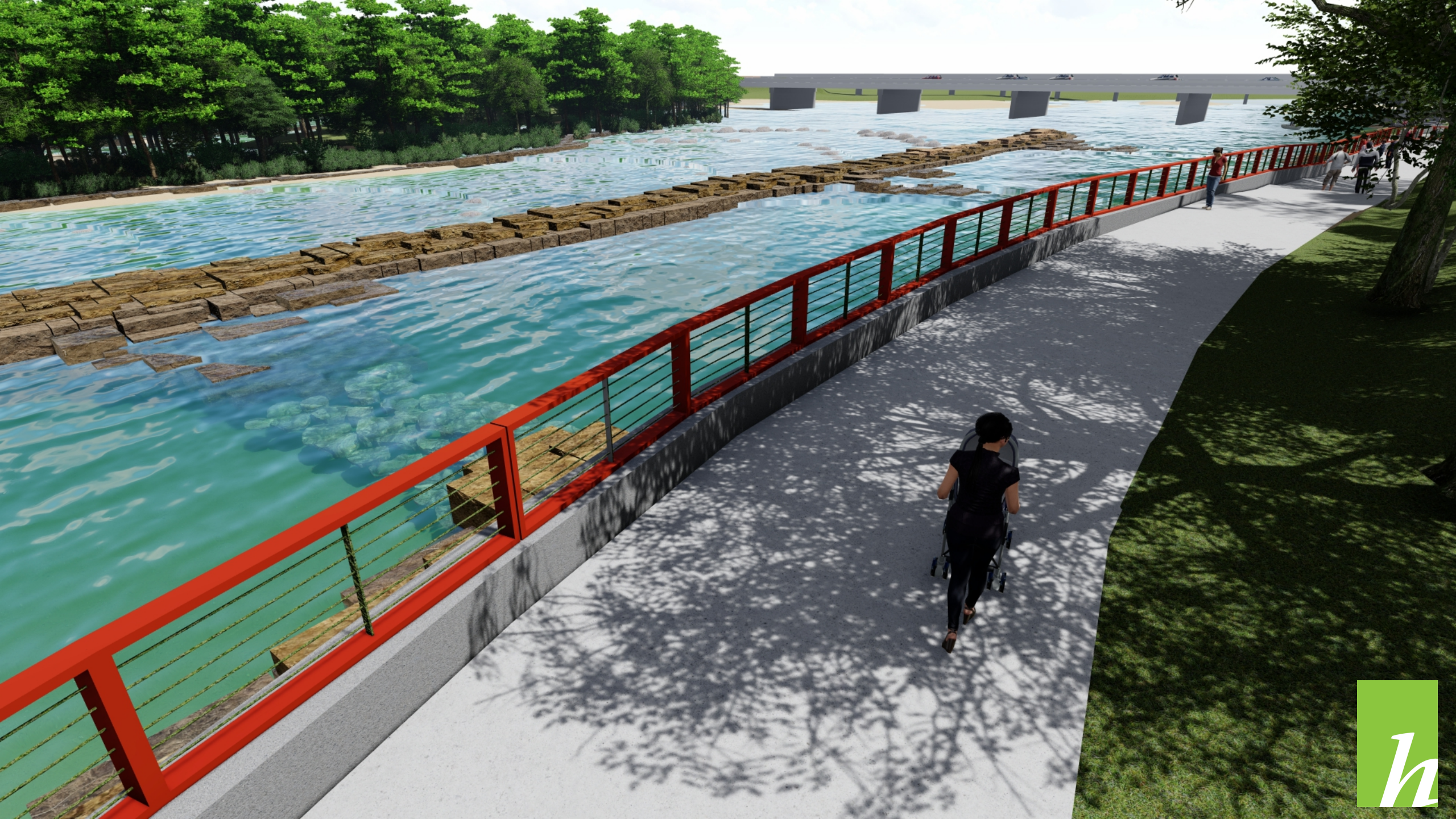
9-12  
MONTHS

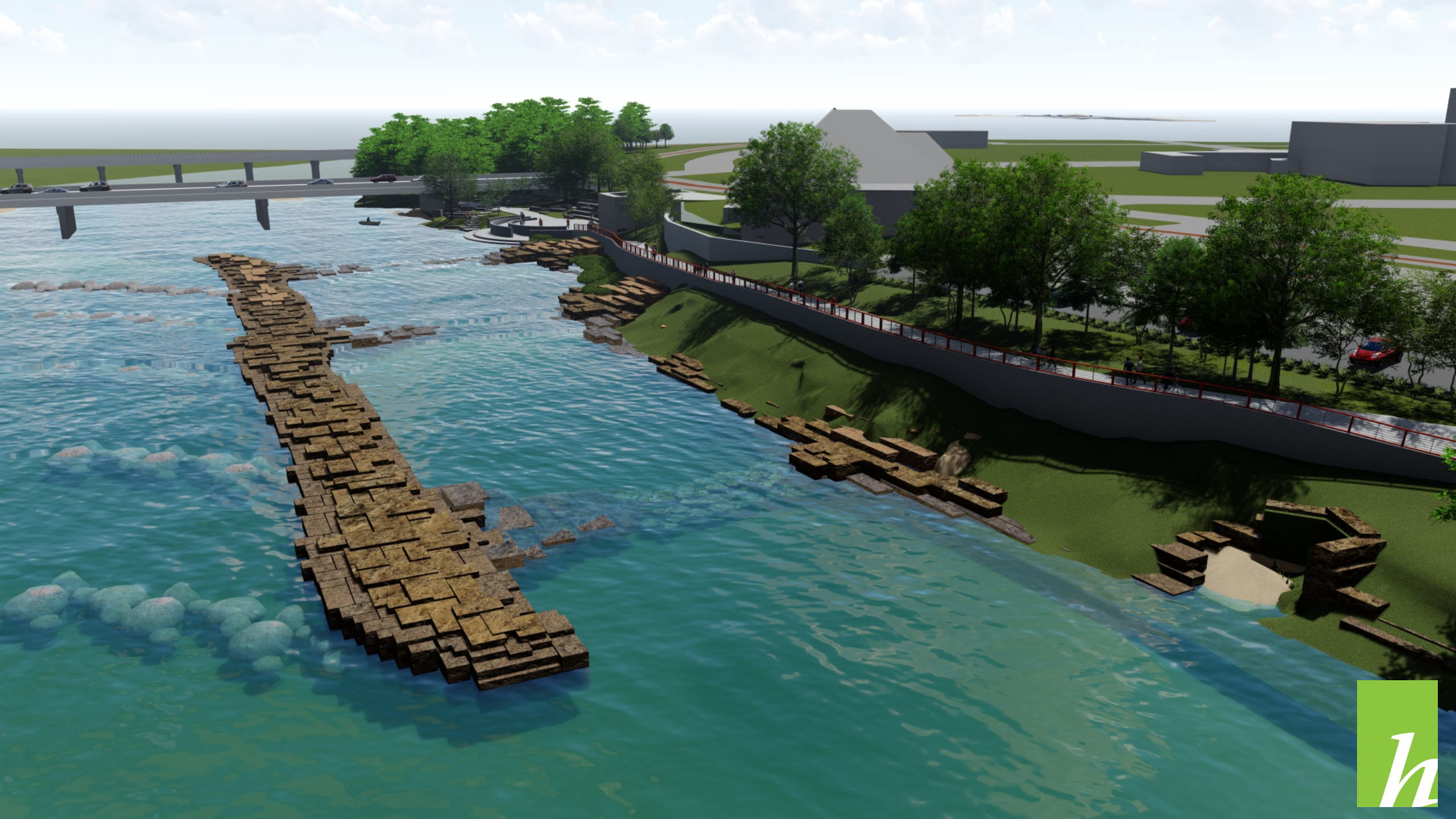


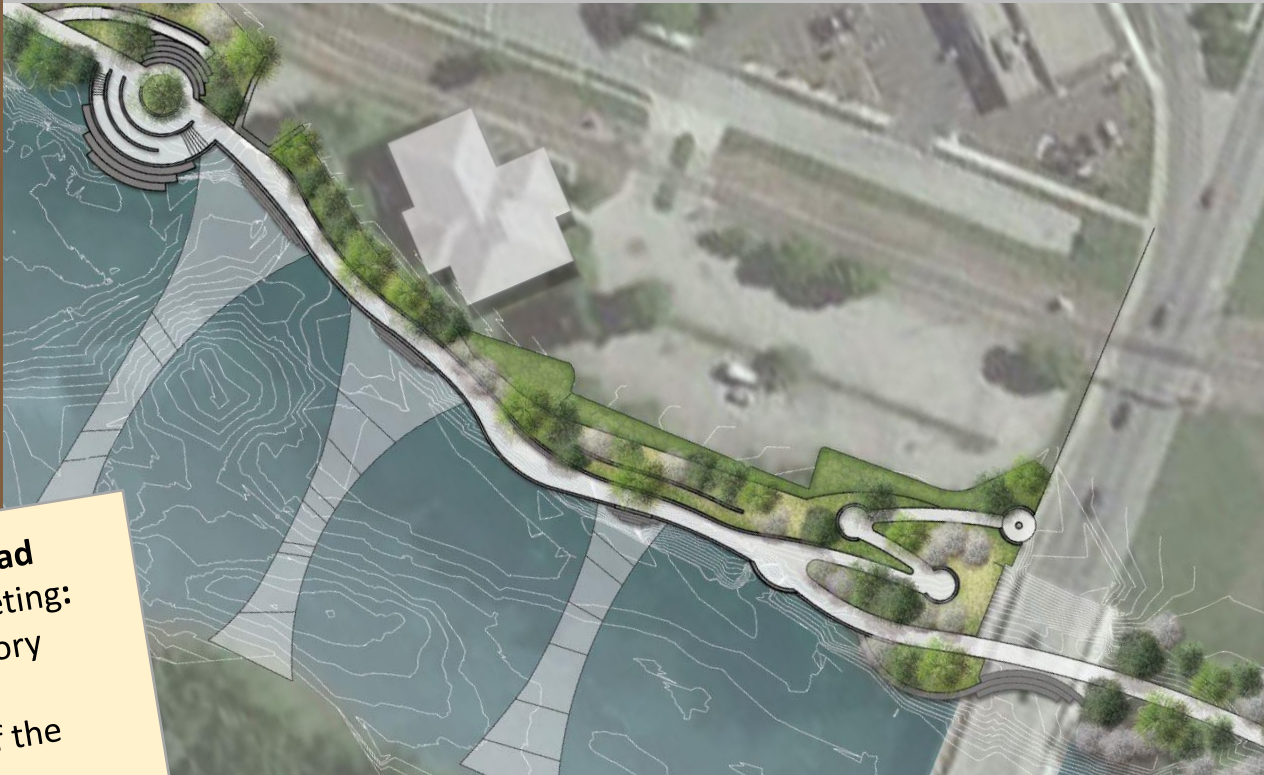
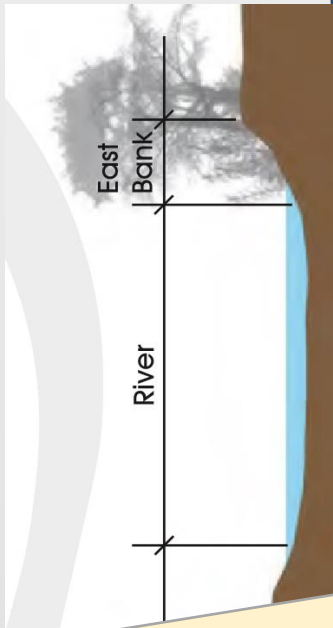












## 30-day Look Ahead

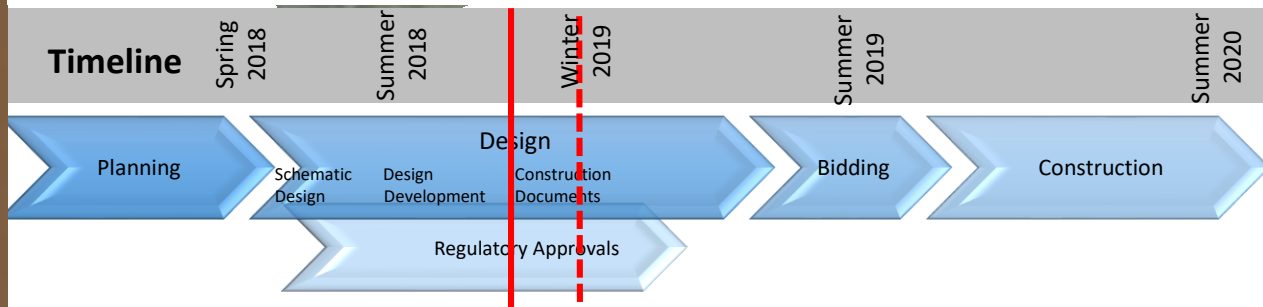
12/17/18 CRC Meeting:

1. Continuing regulatory coordination
1. 3D study model of the riverfront
2. Riverfront website updates
3. Riverfront Task Force Meeting on 11/20/18

## Progress

- Continuing coordination with Permit Agencies
- Fish biologist joining design team to address DNR concerns with fish passage
- Design Development documents are being refined.
- IDEM has reviewed and submitted ERC modification to EPA for their approval.

## Timeline



End of Contract