

# Columbus **RIVERFRONT**

HITCHCOCK  
DESIGN  
GROUP  
creating better places

































# Design Drivers

## Safety

- Remove failing dam
- Provide safe pedestrian route
- Improve access to safety personnel

## Maintenance & Repair

- Potential Landfill Exposure
- Cover & protect exposed S.S.
- Armor & revegetate banks
- Repair eroded areas
- Maintain water elevation up-river

## Economic / Workforce Development

- Improve 'quality of life' & millennial retention
- Increase tourism

## Ecology

- Restore sediment transportation
- Restore fish passage
- Remove invasive plant species
- Strengthen local conservation efforts

## Connections

- Connect People Trail
- Provide access to the river

## Compelling Attractions

- Improve in-river recreation
- Provide gathering spaces along east bank

## Captivating Appearance

- Improve aesthetics of City's front door





# Agency Requested Modifications

## Modification #1

- Incorporated fish passage channel
- Moved trail above ordinary high water mark
- Eliminated mid-river universal access point

## Modification #2

- Moved trail towards top of bank
- Provided riparian habitat corridor along river bank

## Modification #3

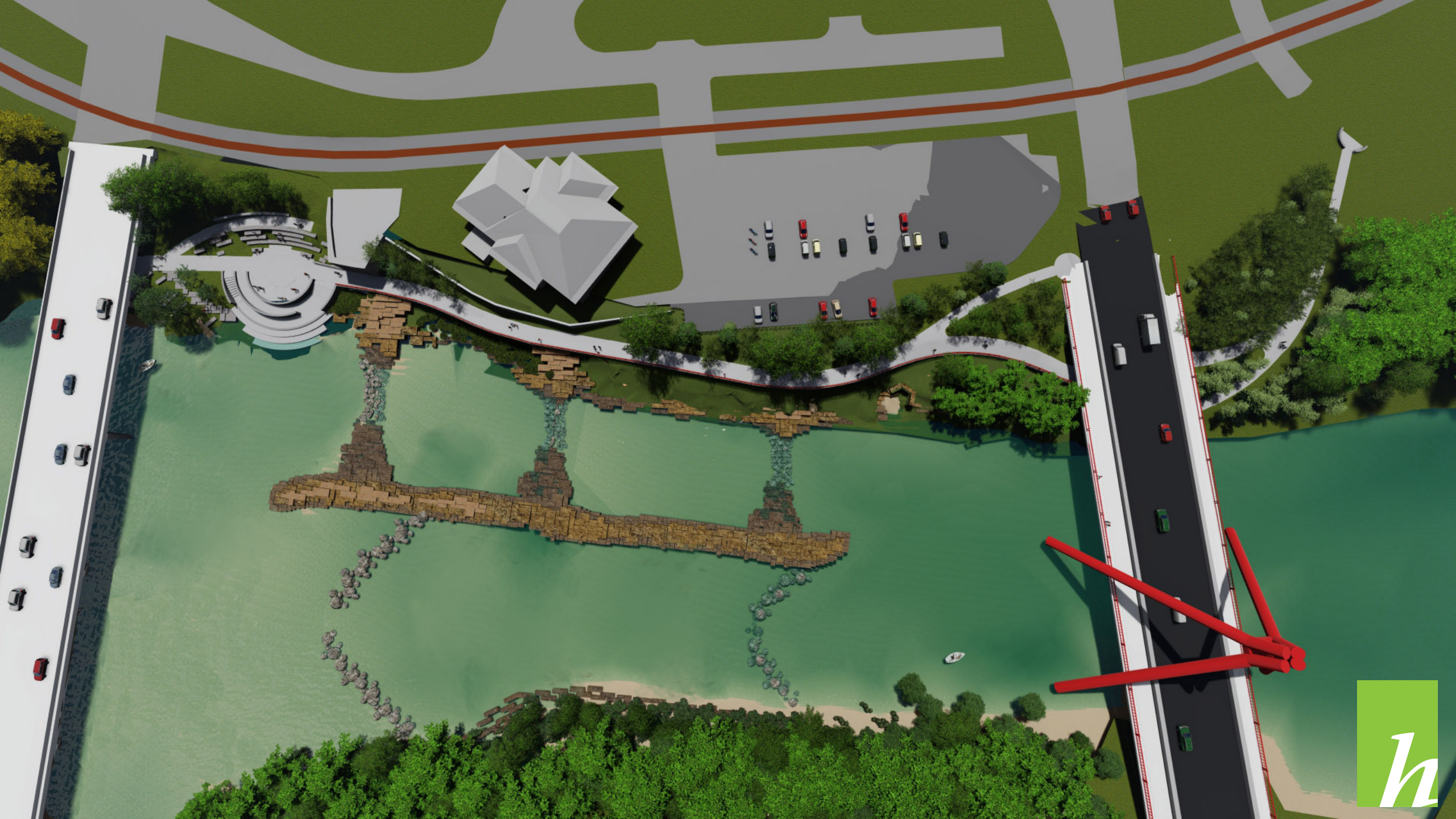
- Incorporate rock arch ramp structure
- Reduced amount of grout required in the structure

## Modification #4

- Modified rock arch ramp to accommodate boat passage



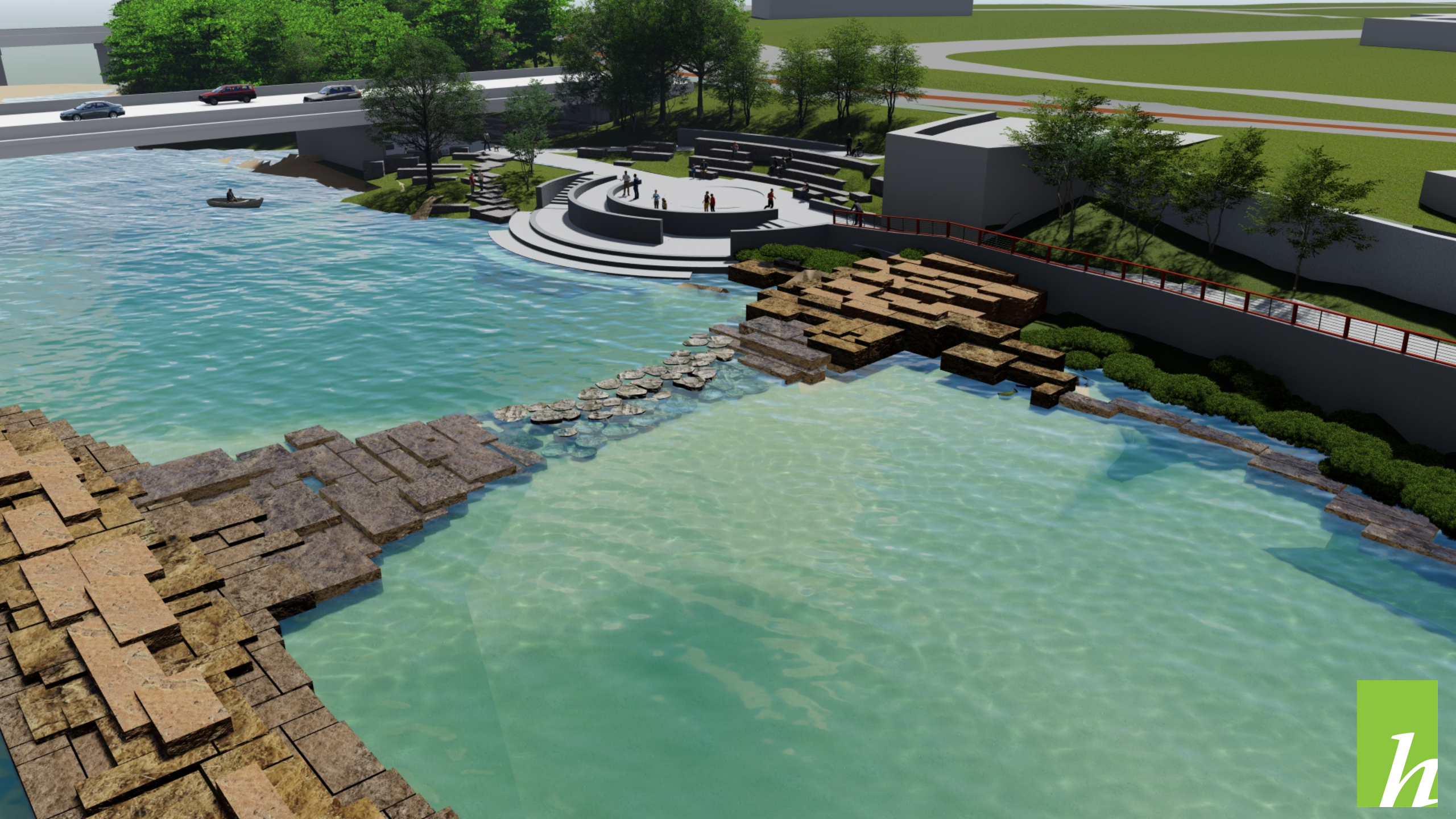




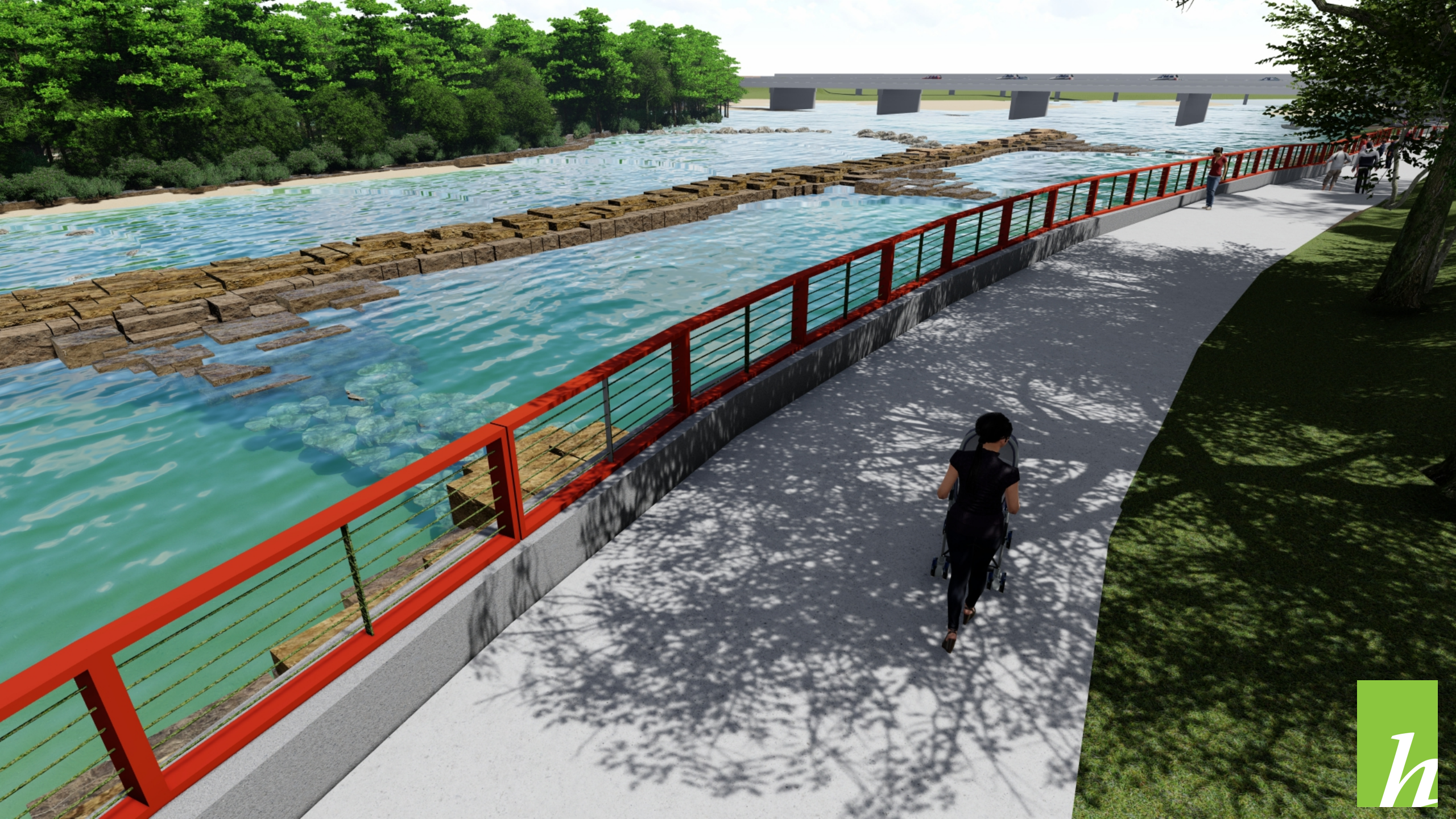




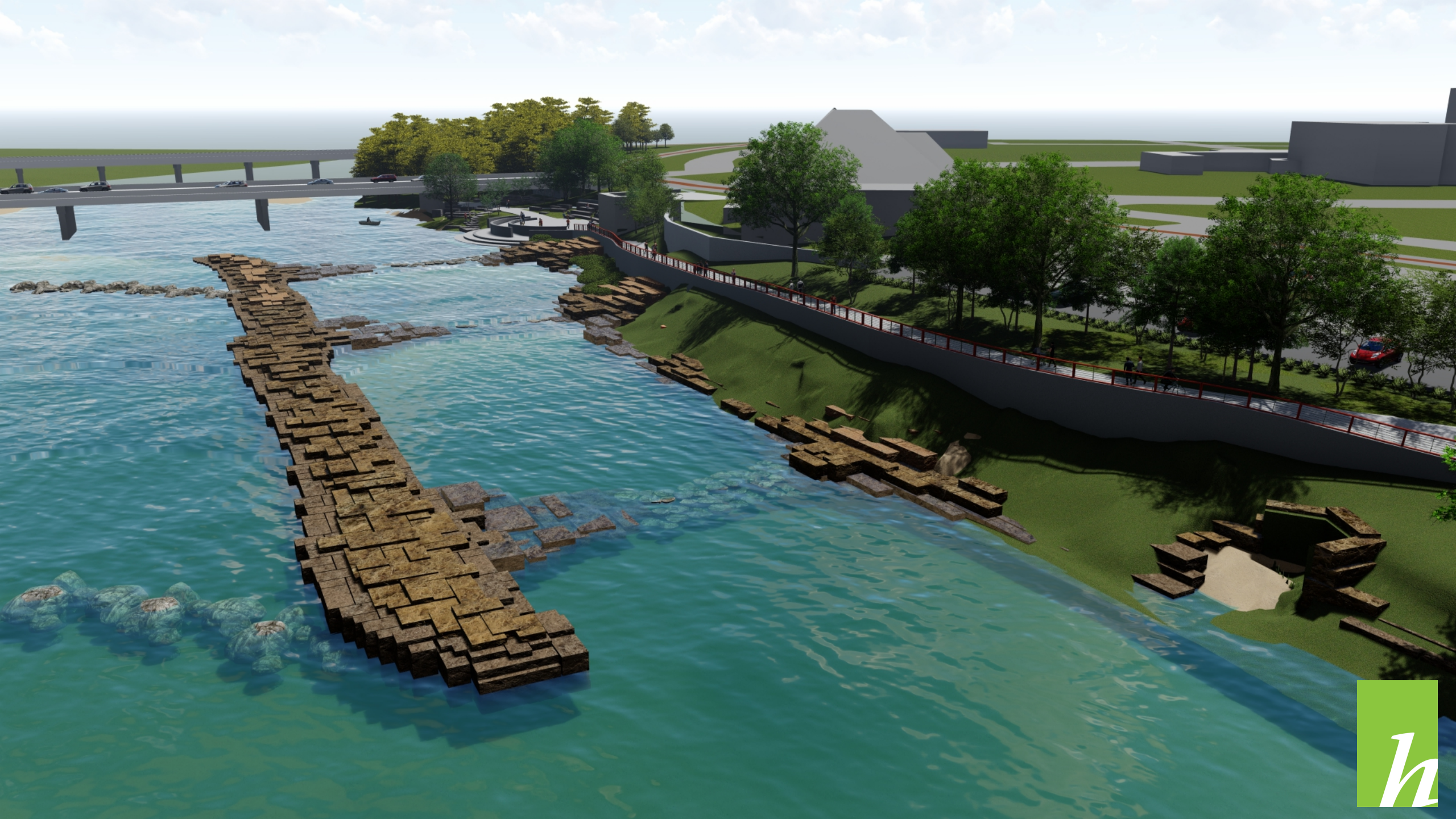














# Columbus **RIVERFRONT**

HITCHCOCK  
DESIGN  
GROUP  
creating better places



**TAYLOR BROS.**  
CONSTRUCTION CO., INC.