

# Columbus **RIVERFRONT**

**Columbus City Council /  
Redevelopment Meeting**  
*November 14<sup>th</sup>, 2023*





# Project Team

## Design Team

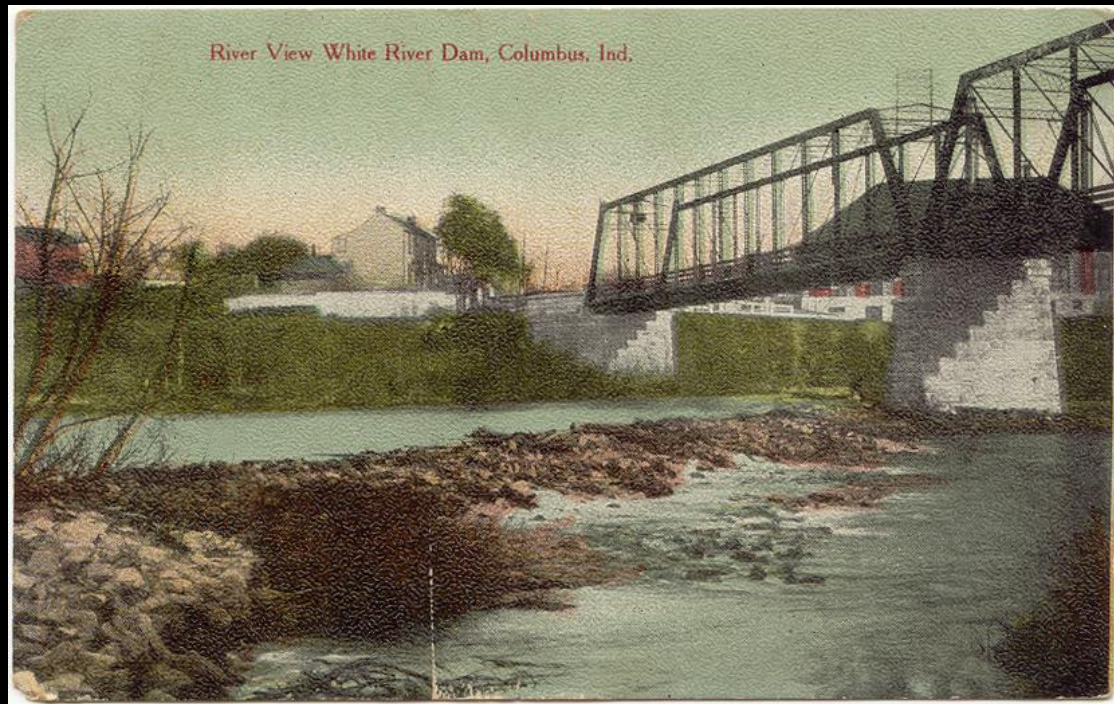
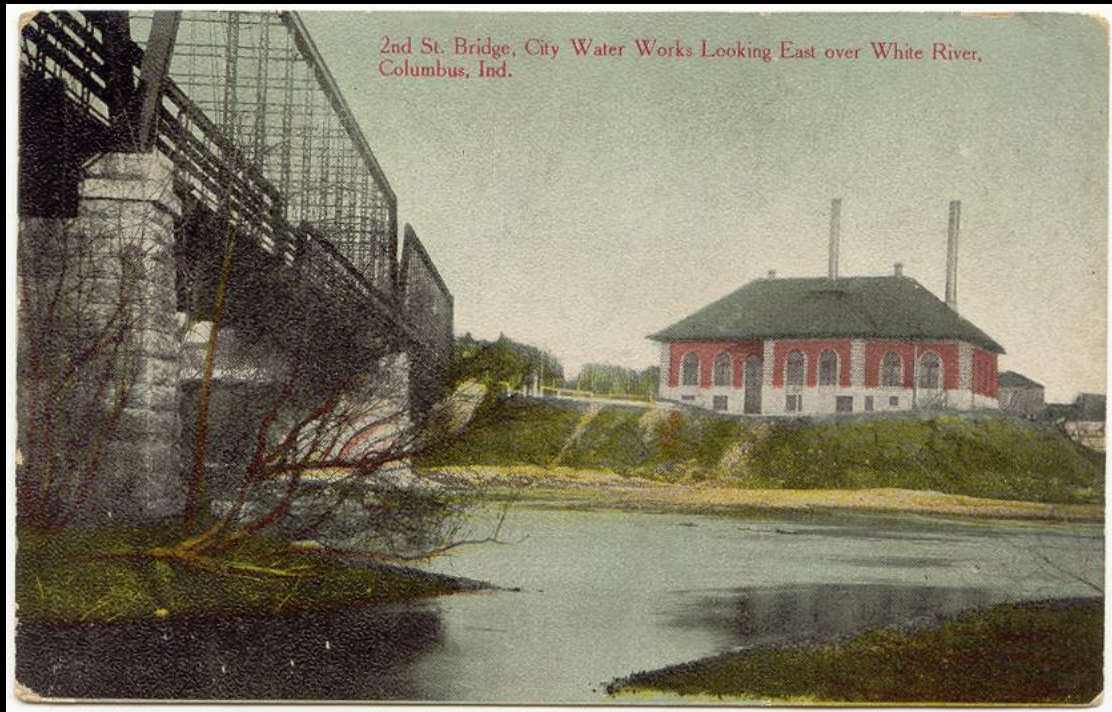
- Hitchcock Design Group – Team Lead / Landscape Architecture
  - Randy Royer, ASLA
- Strand Associates – Civil, Structural, and Electrical Engineering
  - Bill Hawkins, PE
- S2O Design / Calibre – In River Design & Engineering
  - Scott Shipley, PE
  - Riley Adams, EI
- Taylor Brothers Construction Co., Inc. – Constructability, Cost Estimating
  - David Doup

## Owners Representative

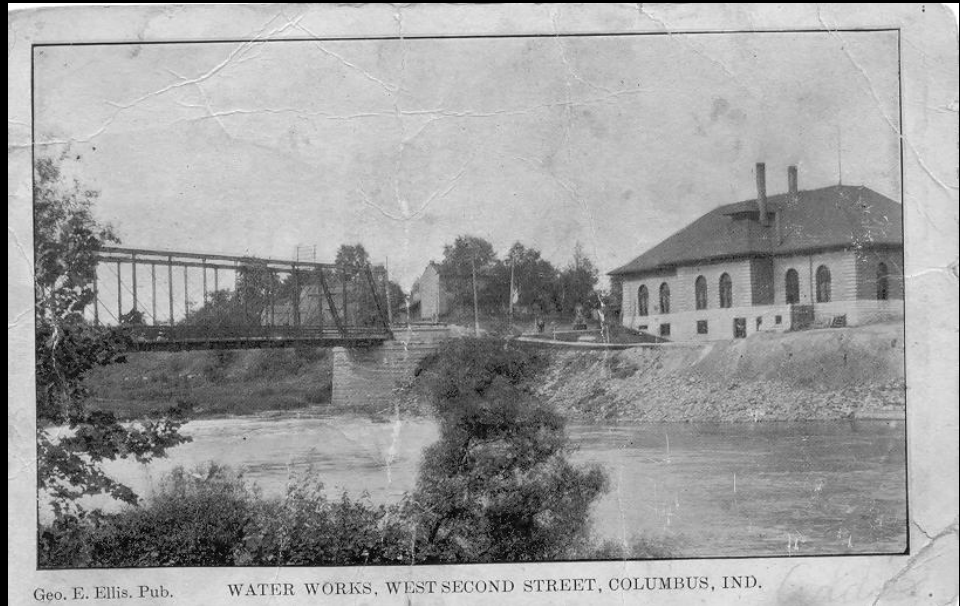
- J.S. Held
  - **Jason Larrison, AIA**











Geo. E. Ellis. Pub. WATER WORKS, WEST SECOND STREET, COLUMBUS, IND.









2016-17

























2023































**2004 Riverfront Concept**





**2015 Riverfront Concept**



# Design Drivers

## **Safety**

- Remove failing dam
- Provide safe pedestrian route
- Improve access to safety personnel
- Lighting

## **Maintenance & Repair**

- Potential Landfill Exposure
- Armor & revegetate banks
- Repair eroded areas
- Maintain water elevation up-river

## **Ecology**

- Restore sediment transportation
- Restore fish passage
- Provide fish habitat
- Maintain wetlands upstream
- Remove invasive plant species
- Strengthen local conservation efforts

## **Connections**

- Connect People Trail
- Provide universal access to the river

## **Compelling Attractions**

- Improve / create in-river recreation
- Provide gathering spaces along east bank

## **Economic / Workforce Development**

- Improve 'quality of life' & employee retention
- Increase tourism

## **Captivating Appearance**

- Improve aesthetics of the City's front door





*2021 Riverfront Design*









Phipps Trail  
TRAILHEAD & INFORMATION

A person sitting on a stone bench on the left side of the path.

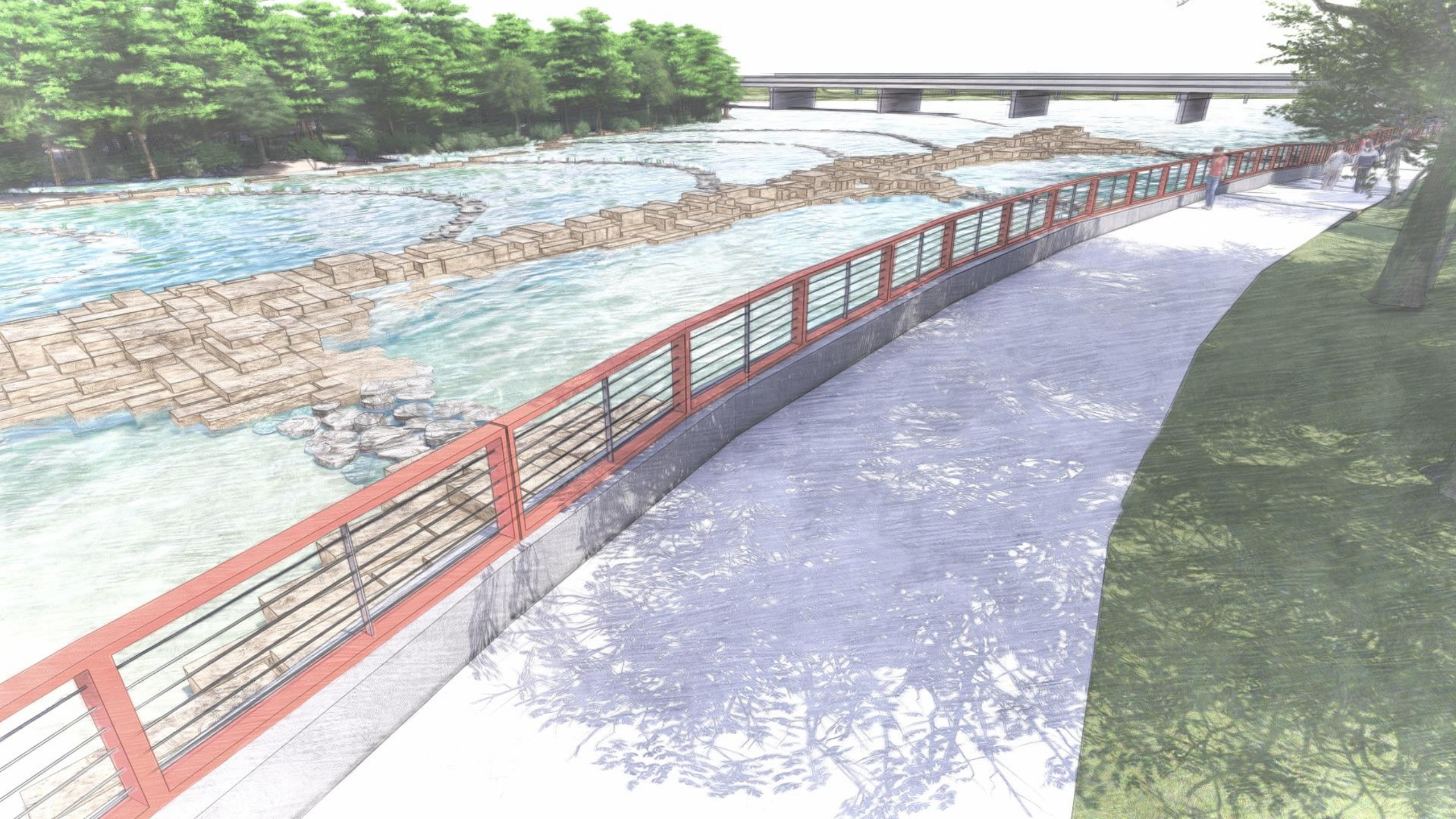
A person standing next to the informational sign.

A family consisting of a man, a woman, and two children sitting on a stone bench on the right side of the path.

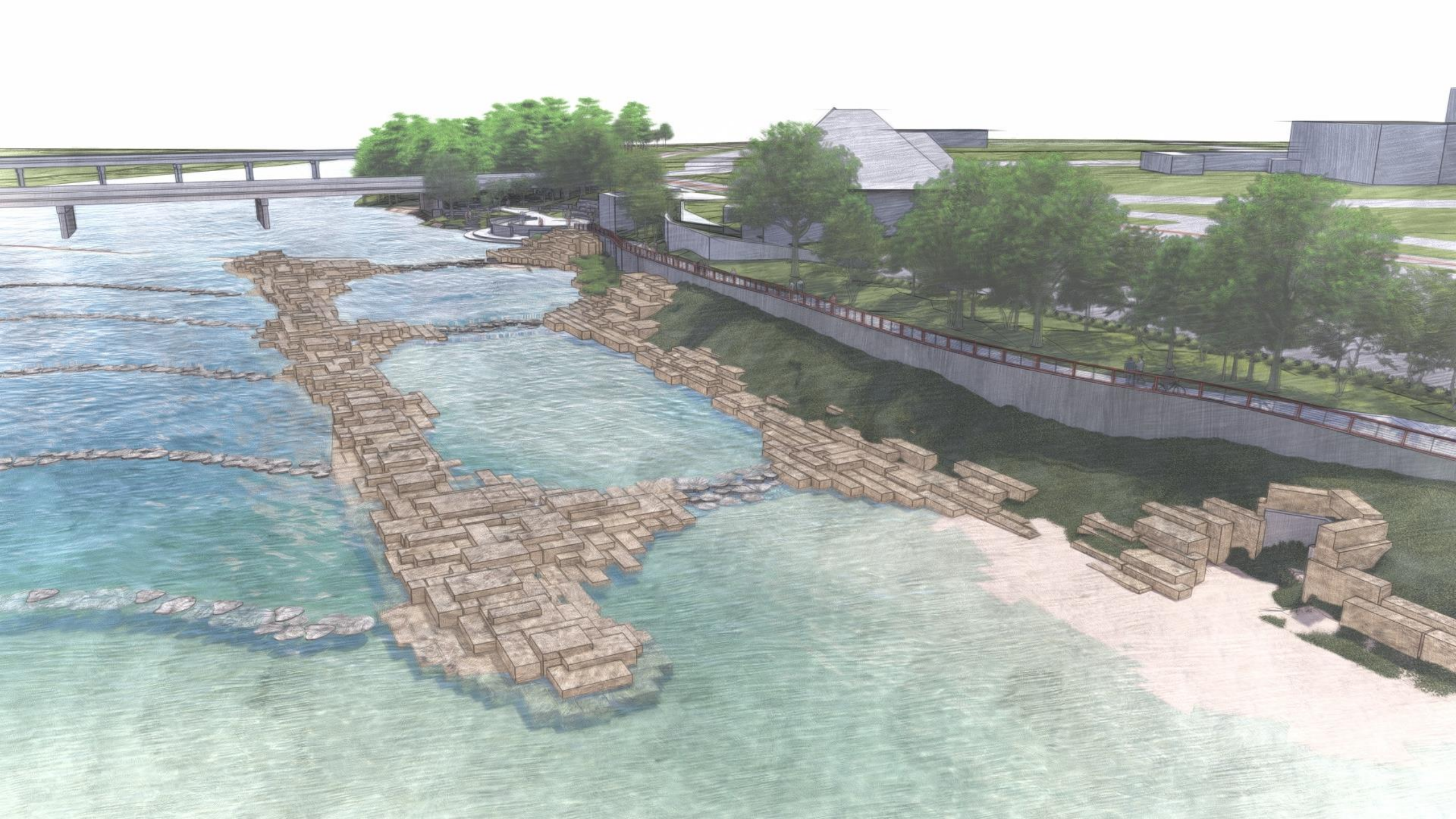
A modern, cylindrical trash can located on the right side of the paved area.

A wooden play structure with a triangular frame and a platform, situated in the background among trees.

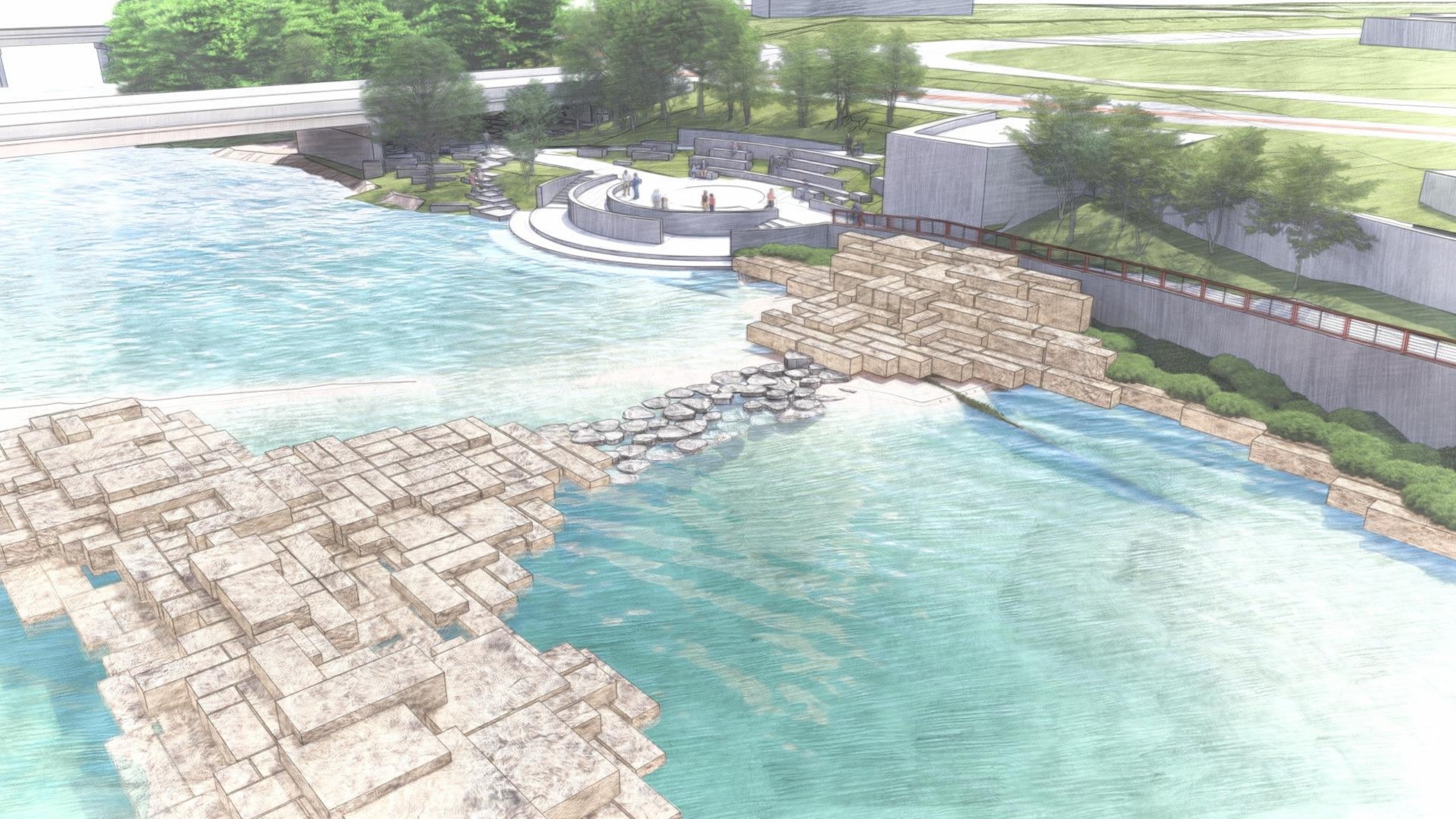




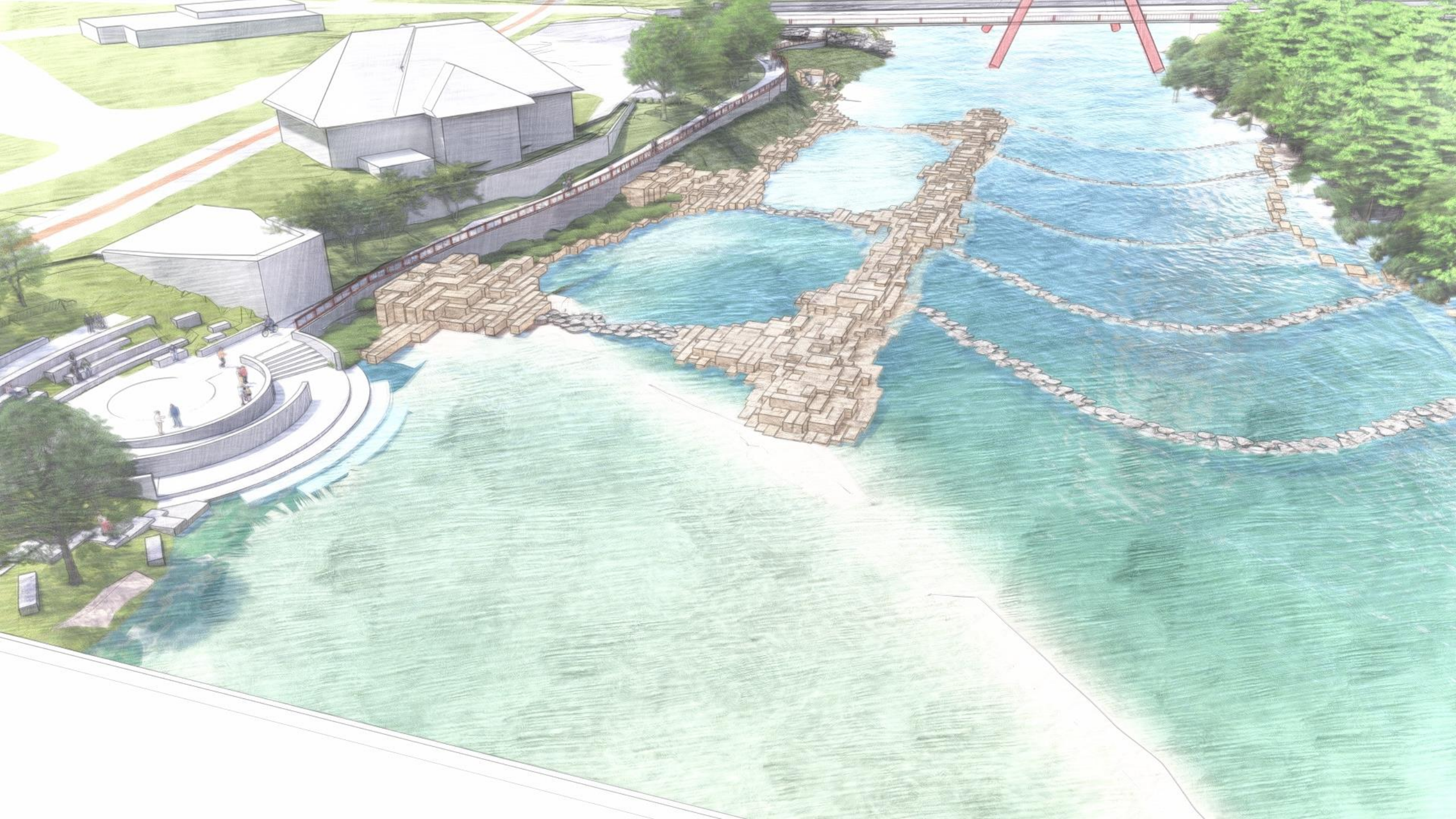


















# Project Estimate

General Requirements / Contingencies	\$3,273,133
East Bank Improvements	\$4,256,350
West Bank Improvements	\$435,000
In-River Improvements	\$3,893,000
Alternates	\$245,000
2 <sup>nd</sup> St. Bridge Trail Connection	
South Trail Head Pedestrian Gate	
2 <sup>nd</sup> & 3 <sup>rd</sup> St. Bridge Concrete Abutment & Concrete Support Painting	
<u>Mitigation / Monitoring</u>	<u>\$1,912,600</u>
	\$14,015,083
Confirmed Funding Sources	\$2,432,000
READI Funds	
Next Level Trails Grant	
Duke Energy	
The Columbus Park Foundation	
<b>NTE Request</b>	<b><u>\$11,600,000</u></b>



# Schedule

- **Completed to Date**
  - **Permits**
    - **DNR**
    - **IDEM**
    - **USACE**
  - **Construction Manager as constructor (CMc) selection**
    - **RFP response**
    - **Interview**
- **Ongoing**
  - **Construction Manager as constructor (CMc) selection**
    - **Contract negotiation**
- **Upcoming**
  - **CMc Contract Approval**
  - **Bidding**
  - **Construction**